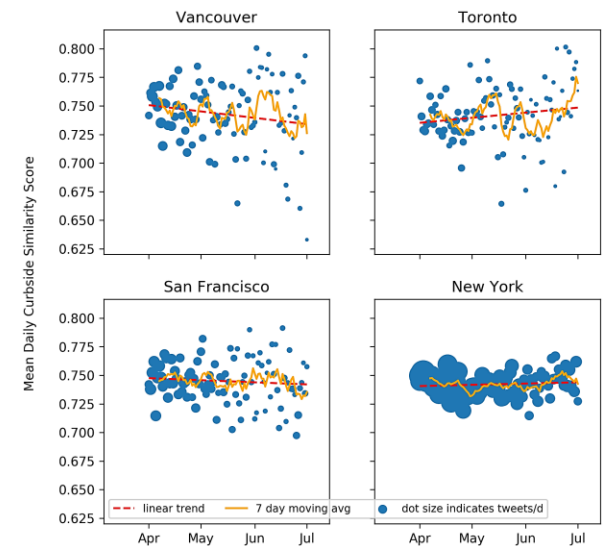
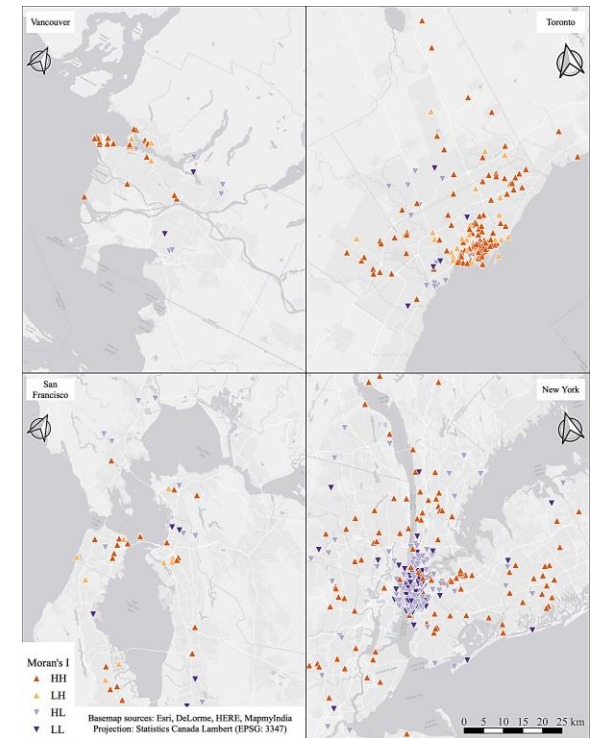


# COVID-19's impacts on the transport sector

- **Funding:** 1) CAP Start-up Fund; 2) CU Denver Young Upwardly Mobile Professors Fund (Dates active: 2019-2021) (Multi-campus; Inter-disciplinary Projects)
- **Keywords:** 1) Curb; Right-of-way; Public opinion; Twitter; 2) Equity planning; Pandemic; Resilience; Travel
- **Findings:**
  - 1) Street-design practice and public opinion are shifting towards permanently opening streets to alternative uses.
  - 2) Low-income counties with racial minorities are seeing higher travel than high-income locations.



Darcy Reynard  
(U Alberta)

Manish Shirgaokar  
(Urb. Reg. Plng.)

Damian Collins  
(U Alberta)



Manish Shirgaokar  
(Urb. Reg. Plng.)

Aditi Misra  
(U Michigan)

Erin Nobler  
(PhD Student)

Diana Muresan  
(Civ. Engg.)

Wesley Marshall  
(Civ. Engg.)



1)

2)