

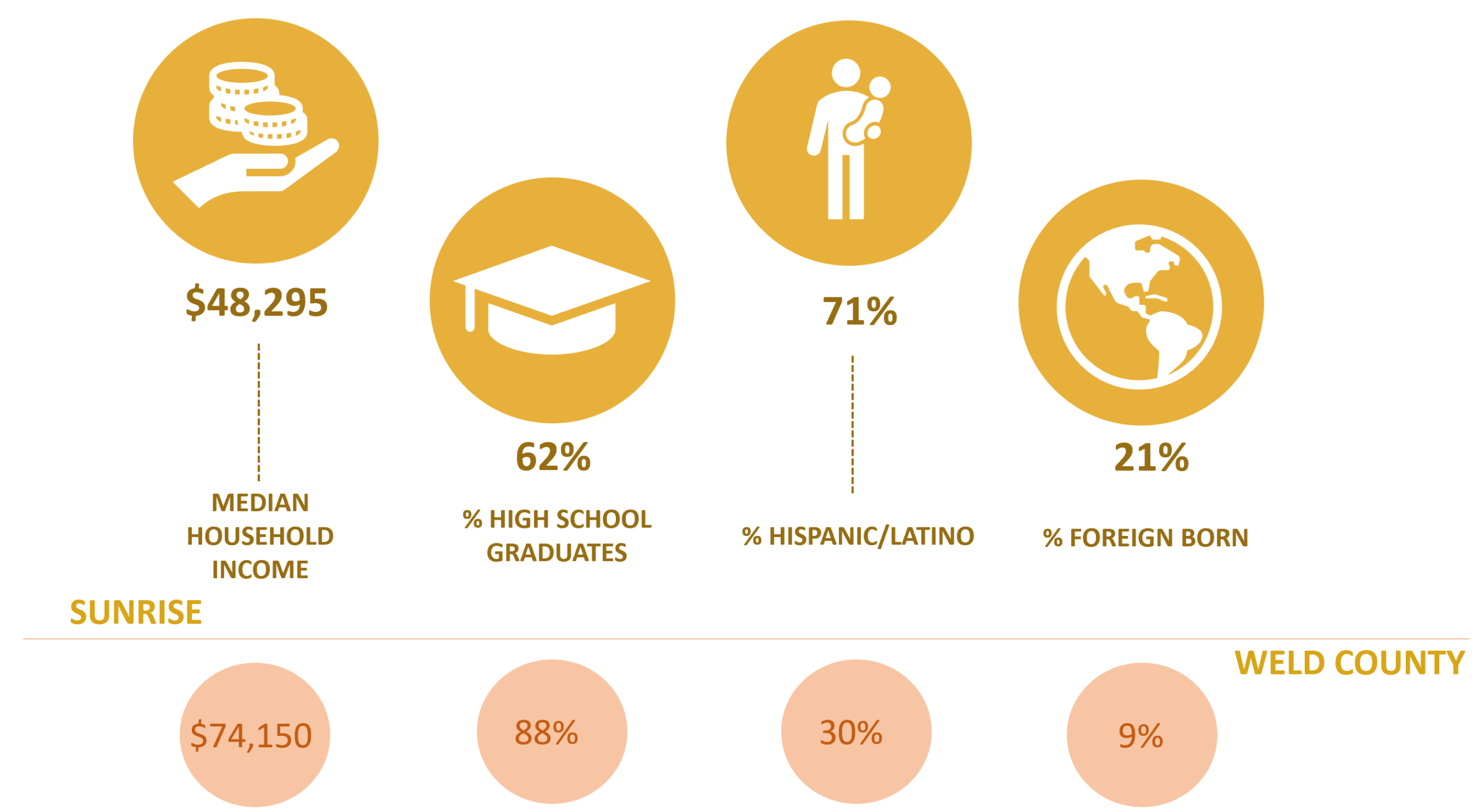
SUNRISE NEIGHBORHOOD LAND USE INITIATIVE

ENGAGING WITH A DIVERSE COMMUNITY ON ZONING AND BEYOND

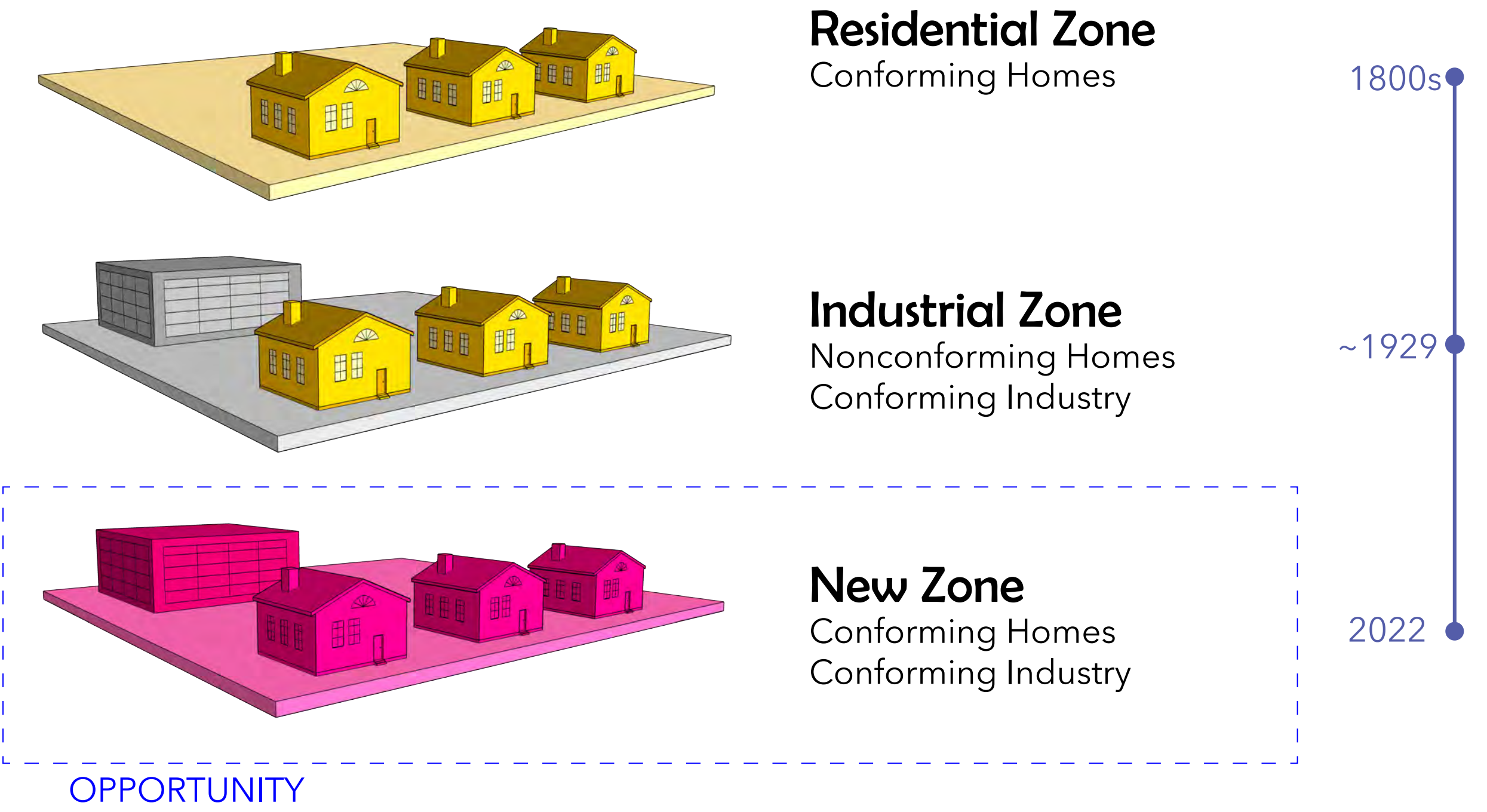
Prepared for the City of Greeley By Sam Snyder



SUNRISE: CONTEXT



OPPORTUNITY: ZONING UPDATE



SOLUTION: COLLABORATIVE ENGAGEMENT

Connect

This phase encompasses initial contact with the Sunrise community on an individual basis to help inform subsequent engagement. This phase helps answer the question: How would the community like to be engaged?

1

Educate

Clear and easy to understand educational techniques and materials must be used to best inform the community. This way, community members are empowered to make decisions regarding the upcoming development code update and decisions in the future.

2

Listen

Once residents and business owners are informed, there should be ample opportunities for these stakeholders to offer their input, ideas, and concerns. Input should be gathered in four ways: through door to door canvassing, online platforms, townhall workshops, and focus-groups.

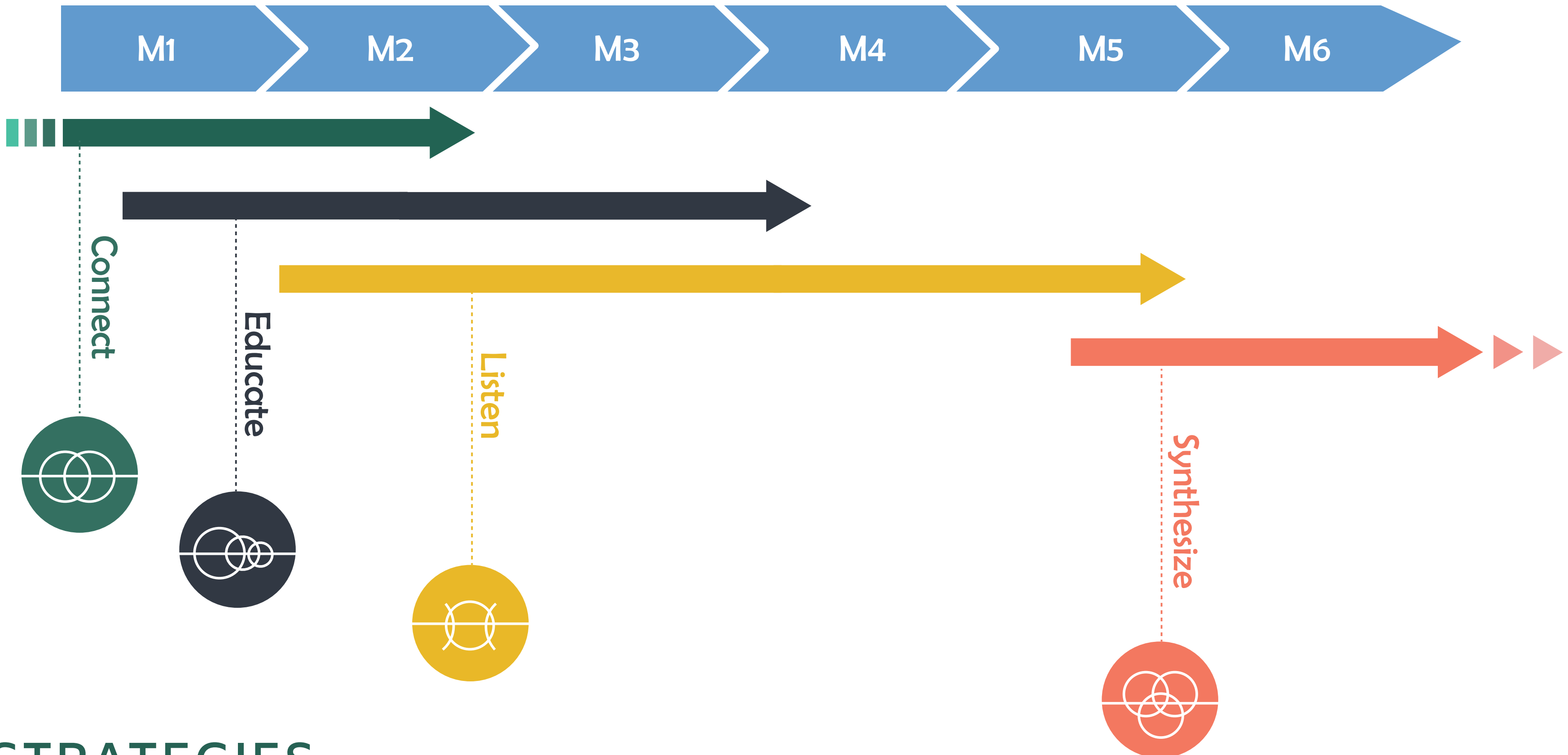
3

Synthesize

Greeley's urban planning department must synthesize the valuable input from each stakeholder group in the Sunrise community. Thereafter, city officials and a small task force of community stakeholders may come up with a solution and implementation plan.

4

Sunrise Community Engagement Plan Timeline Overview



STRATEGIES

- YOUTH CANVASSING TEAM**: Represented by an icon of a person at a door.
- ONLINE TOOLS & GRAPHICS**: Represented by a computer monitor showing zoning information (R-2, I-1, C-3).
- CITIZEN PLANNING ACADEMIES**: Represented by an icon of a person presenting to a group.
- FOCUS GROUPS**: Represented by an icon of a group of people around a table.