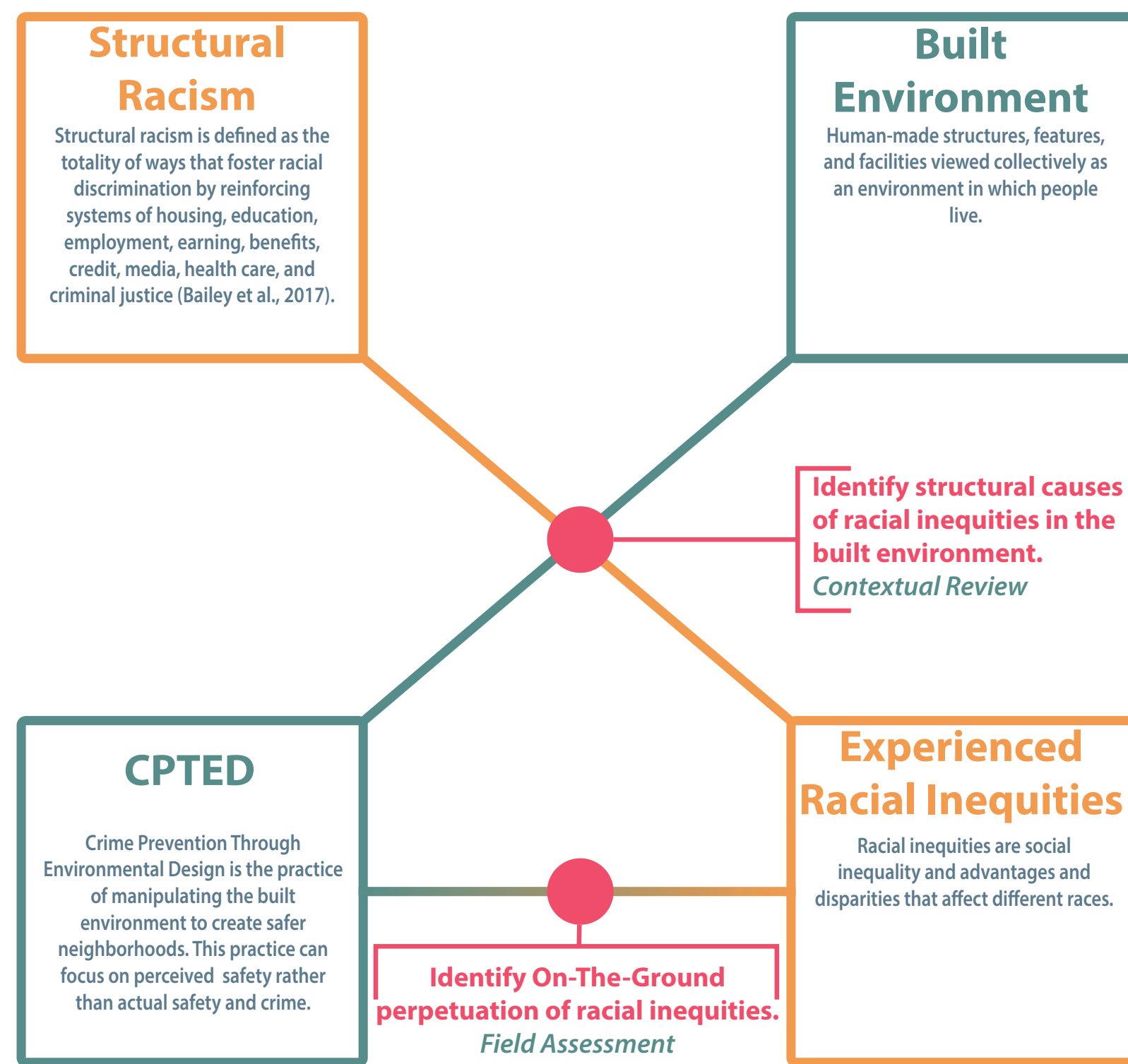


Racial Equity Assessment and Toolkit for The Built Environment

Problem Statement



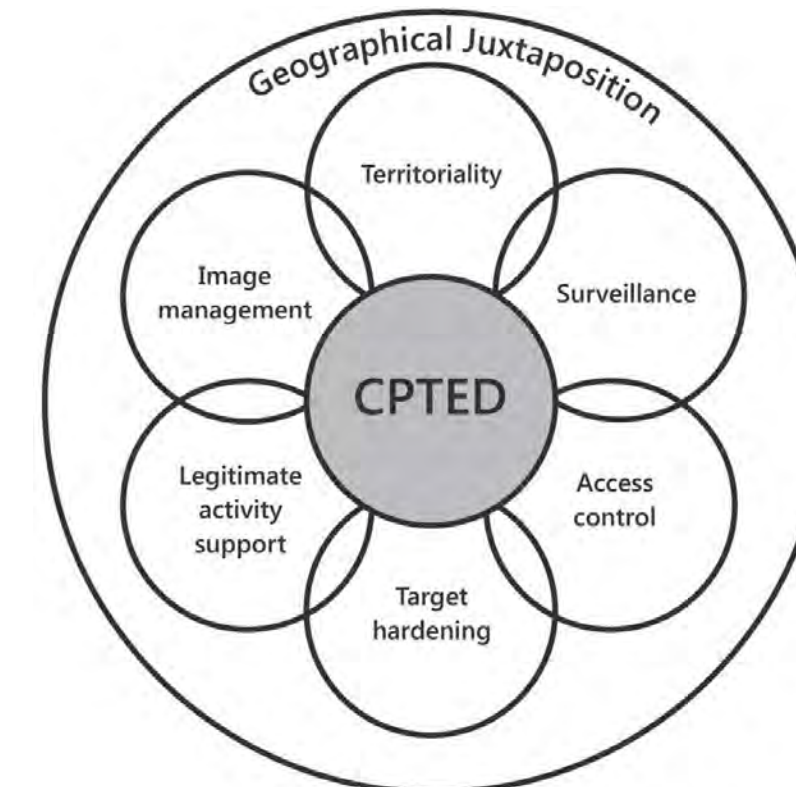
Project Objectives

- Explore Built Environment + Racial Inequities
- Identify Best Practices
- Guidance for Communities Across Colorado
- Create Racial Equity Assessment Focused on CPTED
- Advance Racial Equity Across Colorado

Racial Inequities and Impacts

- **Structural Racism**
-Housing, Education, Employment, Earning, Benefits, Credit, Media, Health Care, and Criminal Justice
- **Roots of Racism in the Built Environment**
-Slavery, Post-War, Jim Crow, Red-Lining, Current Zoning
- **Current Impacts**
-COVID-19, Living Conditions, Health, Mistrust
- **“How do I fix racism?”** We should be asking **“How do we advance racial equity in our community?”**

Racial Equity Assessments and CPTED



Source: A Review and Current Status of Crime Prevention through Environmental Design (CPTED). Cozens, Love. (2015)

Defining the Process

CPTED Racial Equity Methodology

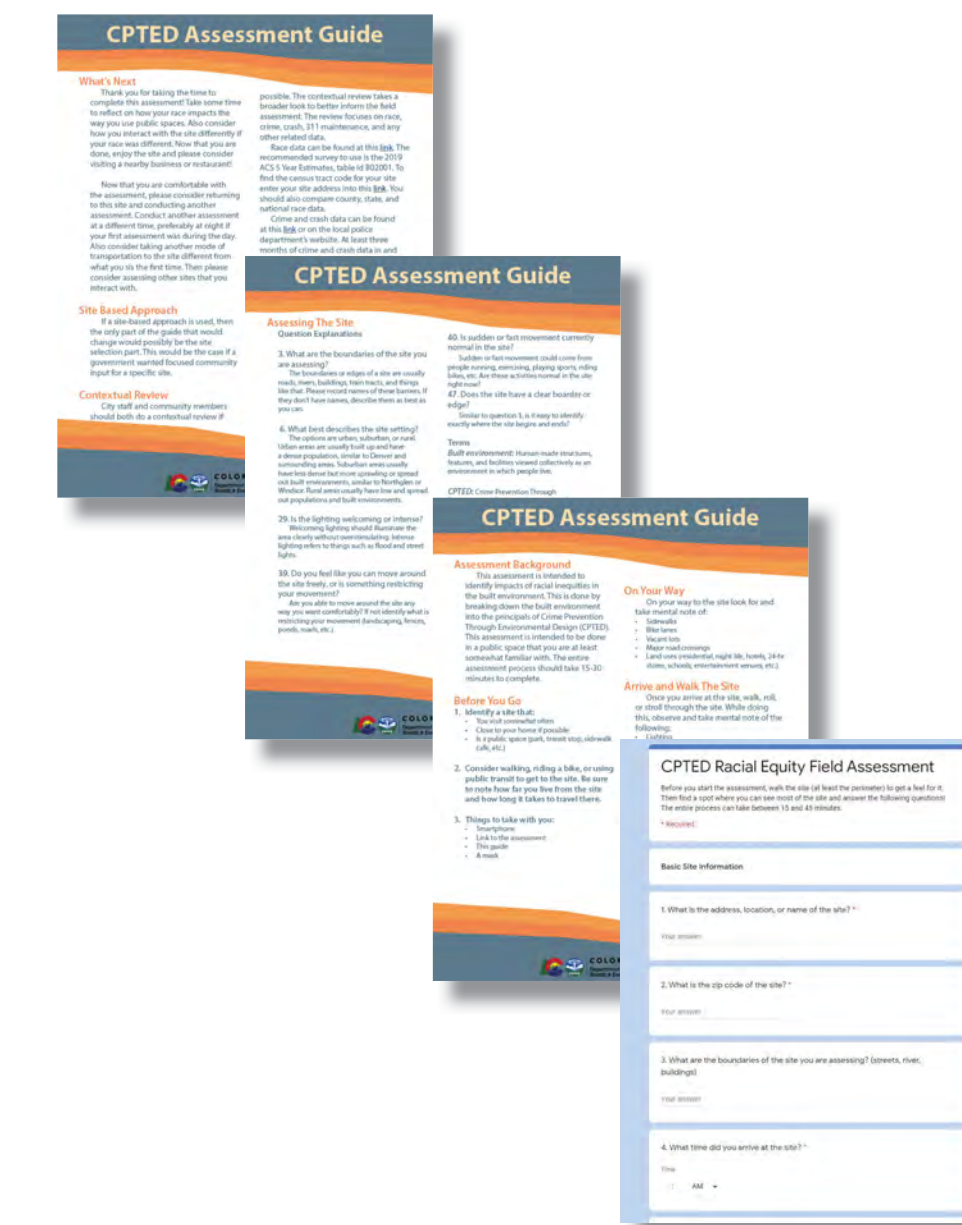
Overall Process

1. Identifying Stakeholders
2. Engaging Stakeholders
3. Identifying and Documenting Racial Inequities
4. Examining the Causes
5. Clarifying the Purpose
6. Considering Adverse Impacts
7. Advancing Equitable Impacts
8. Examining Alternatives or Improvements
9. Ensuring Viability and Sustainability
10. Identifying Success Indicators

Assessment Process

3. **Identifying and Documenting Racial Inequities**
The **field assessment** will collect information that will identify racial inequities in the built environment through analysis.
4. **Examining the Causes**
The **contextual review** will collect and analyze information that will examine the causes of the racial inequities identified in the field assessment.

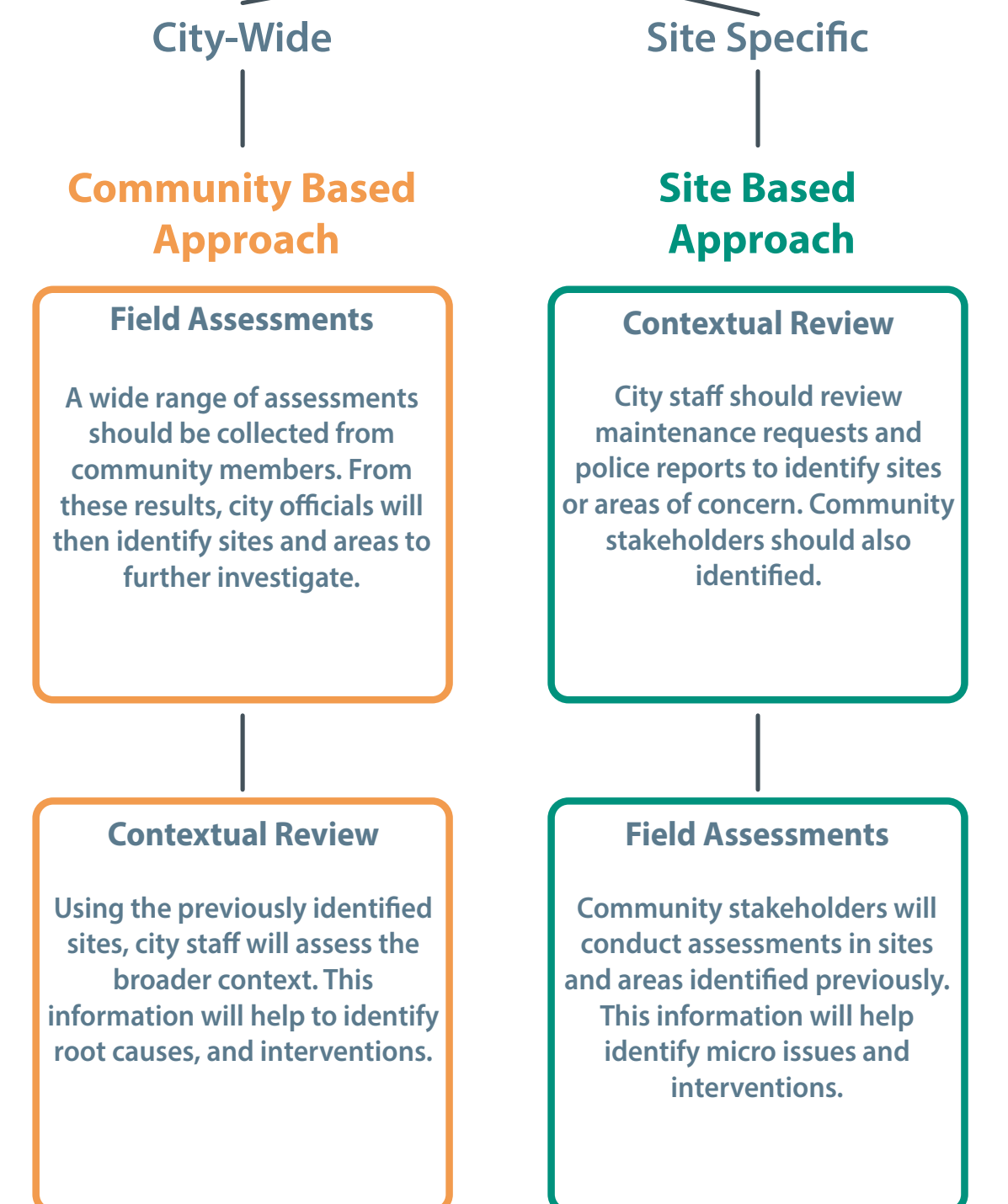
Assessment & Guide



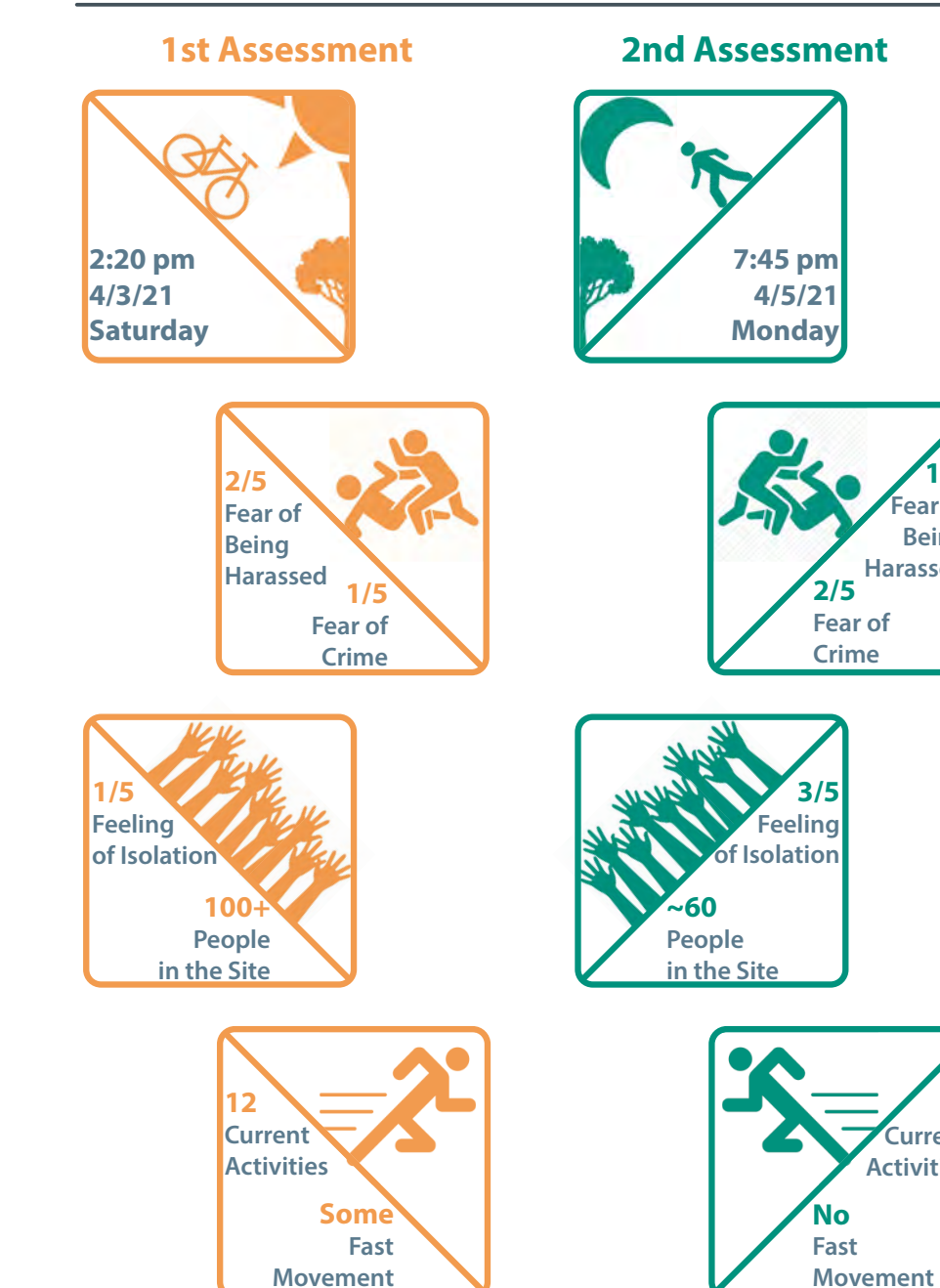
Selecting Approach

CPTED Racial Equity Assessment Approach

Is the goal to understand racial equity at a city-wide scale, or at a site specific scale?



CPTED Racial Equity Assessment Findings City Park Fort Collins, Co



Assessment and Contextual Review Findings

