

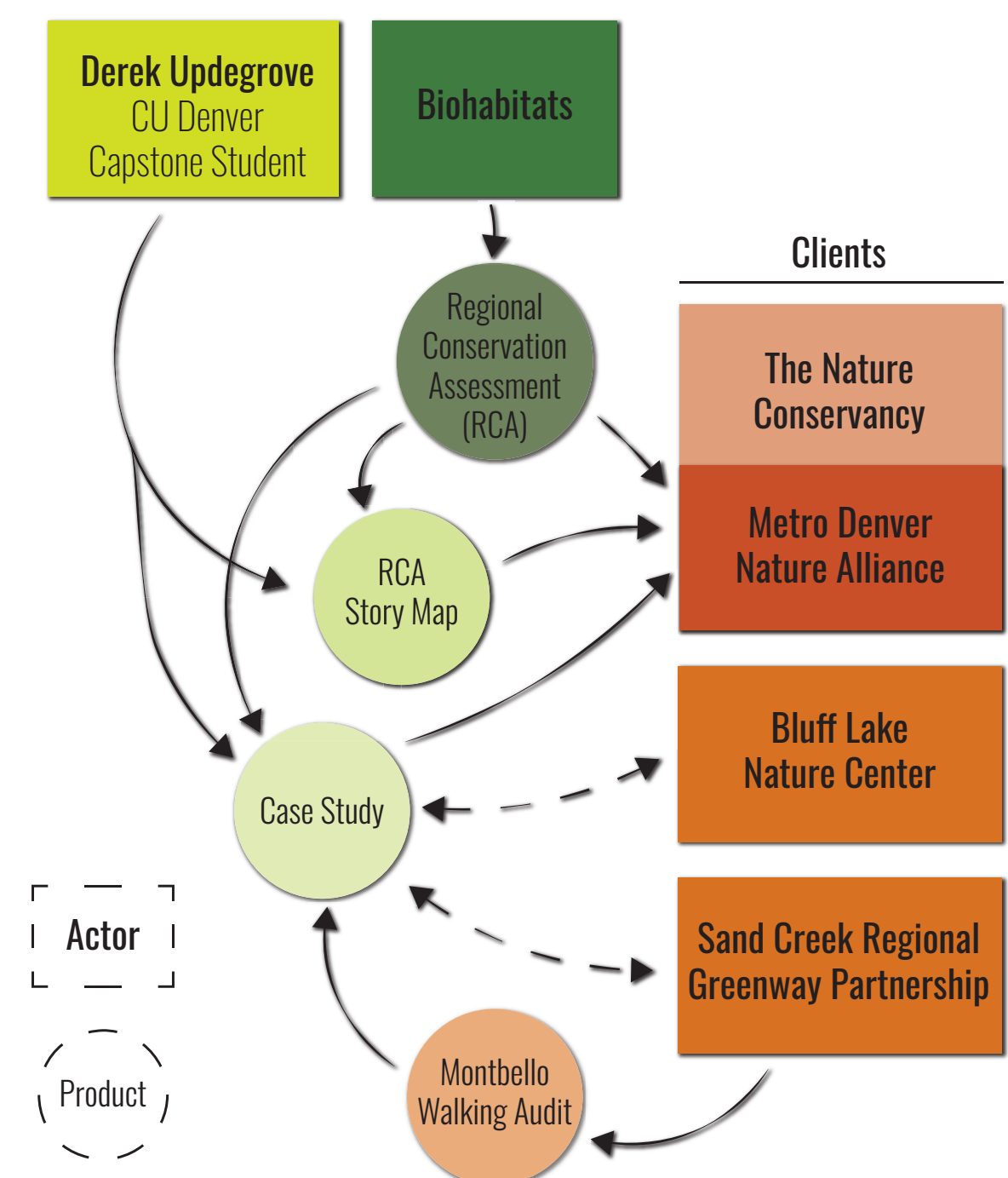
Reconnecting to Nature: Sand Creek and Bluff Lake

Master of Urban and Regional Planning
COLLEGE OF ARCHITECTURE AND PLANNING
UNIVERSITY OF COLORADO DENVER

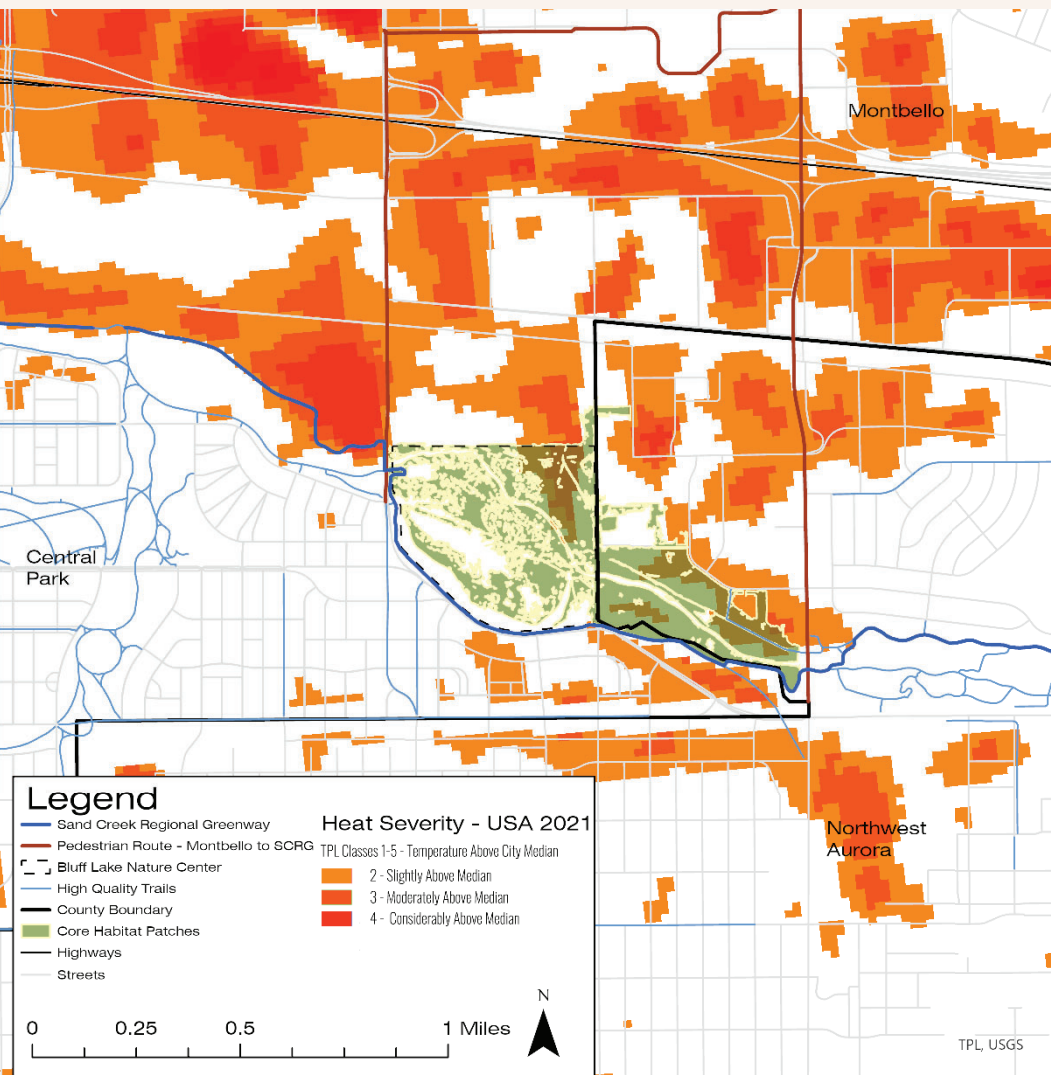
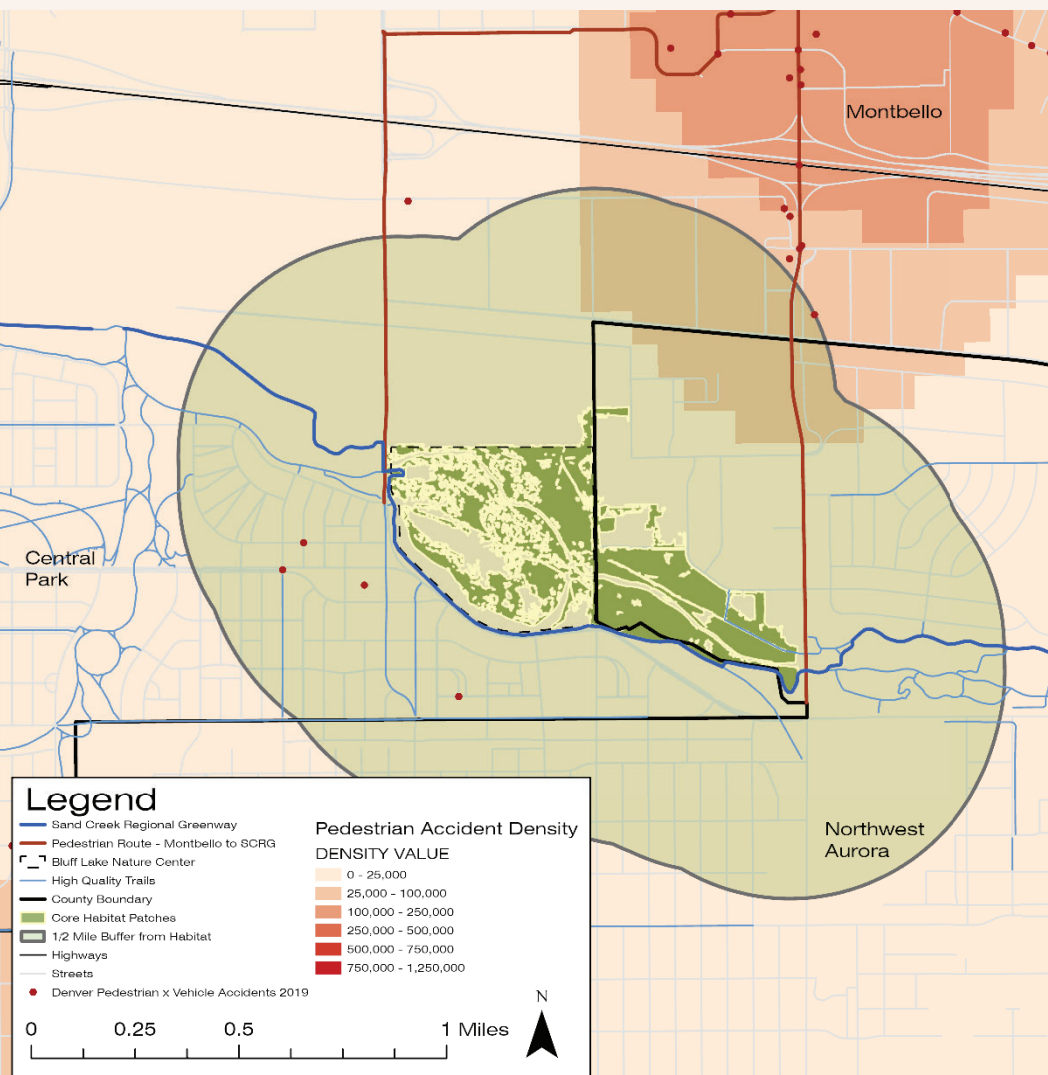
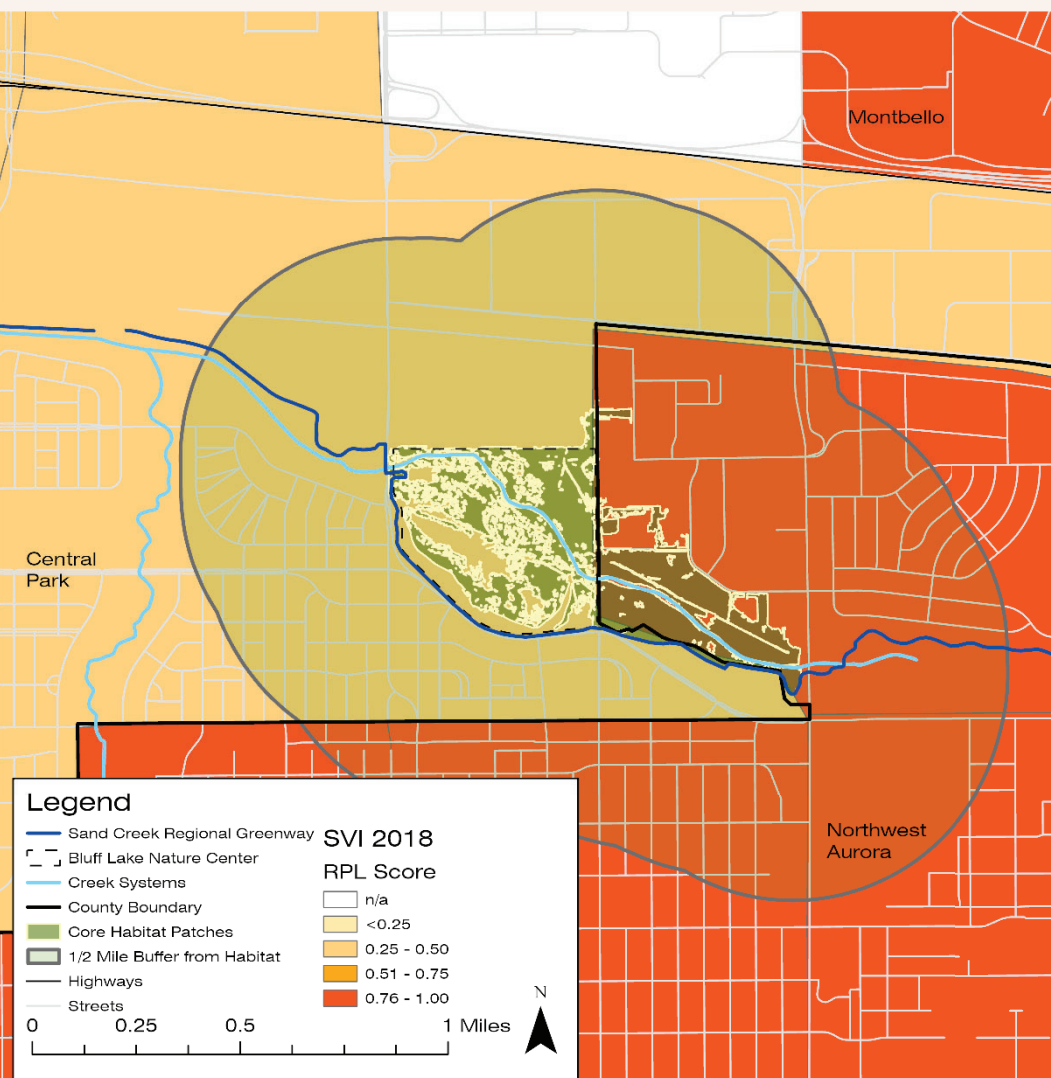
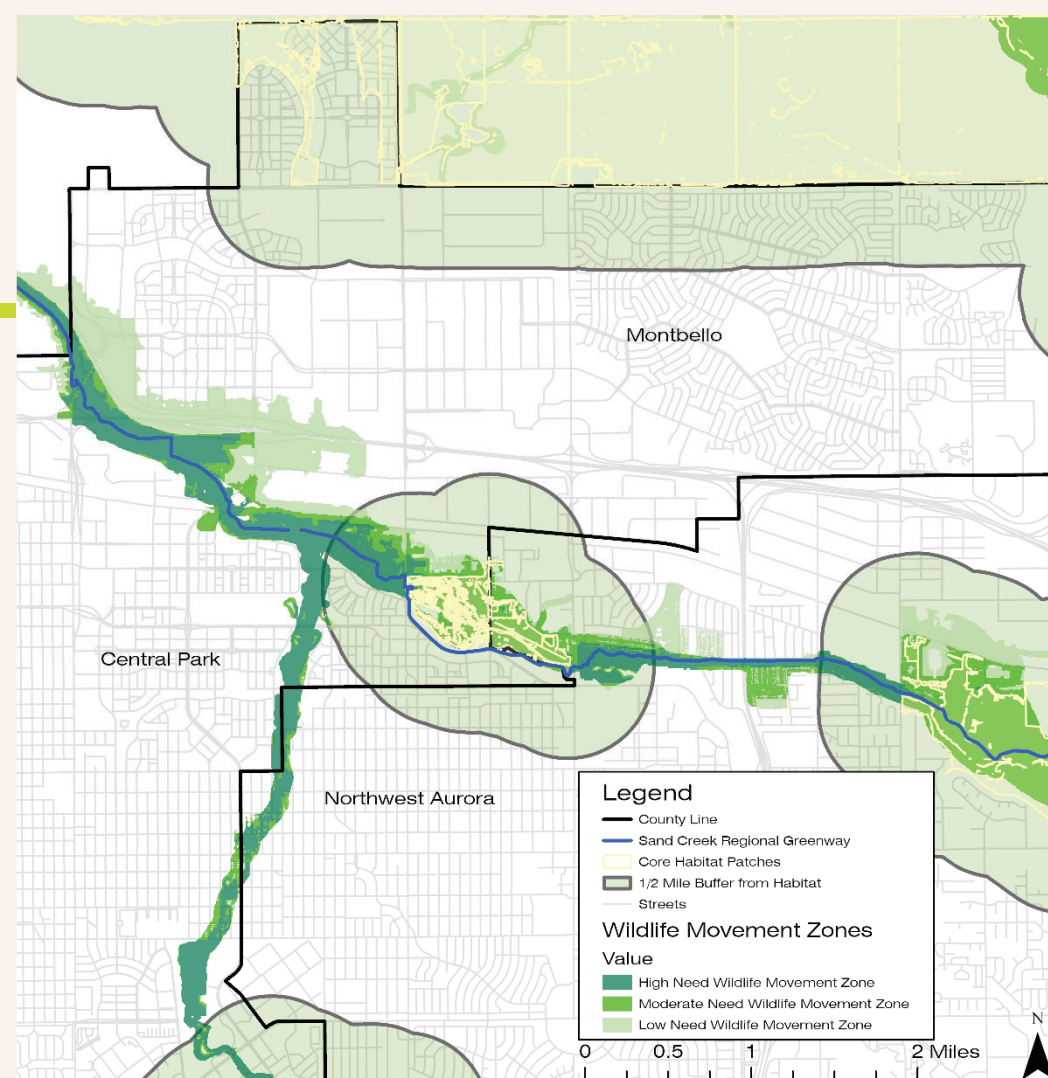
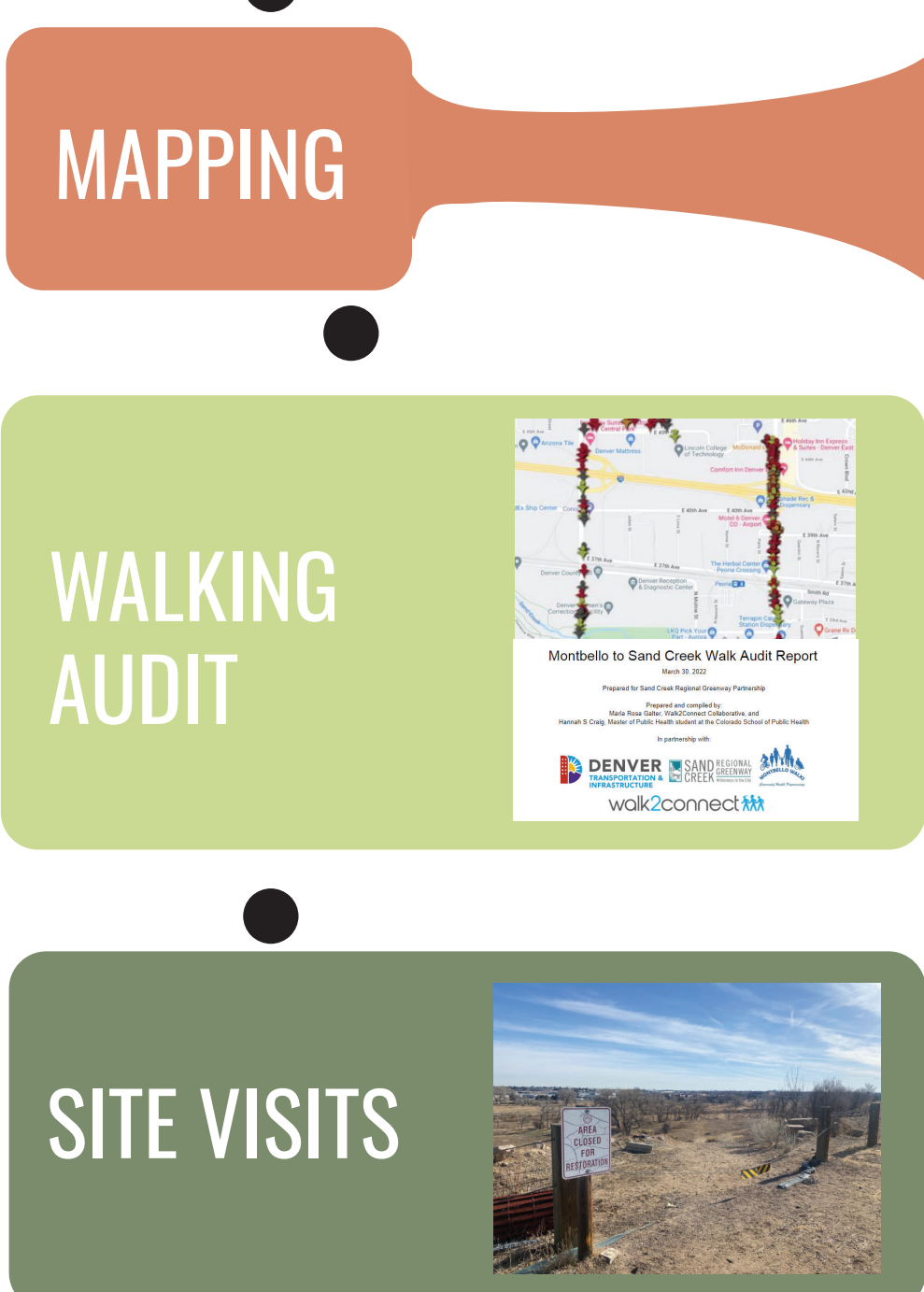
Derek Updegrove + Biohabitats | CU Denver CAP | MURP Capstone

As the Metro Denver Nature Alliance gears up to create the Vision for Nature + People planning document, I generated a case study highlighting Biohabitats' Regional Conservation Assessment data set as a tool for local organizations to advocate for access to their nature-based programming.

ORGANIZATION CHART:



METHODS:



SCAN HERE
FOR THE FULL STORY



DEFINING GOALS

- Ecological Outcomes**
 - Water Quality
 - Ecosystem Restoration
 - Top Soil Protection
- Human Outcomes**
 - Communication
 - Wayfinding
 - Pedestrian Connections
 - Tree Canopy/Shade

SAND CREEK AND BLUFF LAKE | INTERVENTIONS

- A** Build a western entrance to Bluff Lake to provide safer access for those entering from the west, protecting habitat and offer an opportunity for new educational signage
- B** Create a facilitated entrance point at the Peoria-Sand Creek bridge with wayfinding to create a safer experience for pedestrians and to protect soil and natural environment
- C** Add new street trees, create new crossings, and add wayfinding stenciled elements to safely guide pedestrians to the Greenway and Nature Center
- D** Improve bus stops by adding shade structures, street trees, and benches. Also, add maps and wayfinding to guide potential visitors to the natural areas.
- E** Naturalize drainage ways and private properties to add ecological diversity beyond the Sand Creek corridor, pretreat stormwater before entering Bluff Lake, and beautify the urban setting
- F** Restore and protect the high quality habitat on Aurora Parks and Recreation property to benefit the larger ecological corridor. Consider deeding to Bluff Lake Nature Center

Opportunities for Interventions

