

Austin Troy: How does crime relate to urban nature?

Crime is known to be influenced by the environment, but questions remain as to how urban vegetation and landscaping affects it. Using Baltimore as a case study, the team analyzed field data from over a thousand properties and GIS data of the entire region and found that: 1) tree canopy is associated with a significant reduction in crime, even after adjusting for socio-economic status; 2) more deliberate landscaping practices are associated with a significant drop in crime for that block and 3) high crime parks bring down property values while low parks do the opposite. Results were published in three articles in the premiere journal *Landscape and Urban Planning* and have been cited over 600 times.

- Funders: USDA Forest Service/ National Science Foundation (active 2011-2018)
- Partners: USDA Forest Service
- Research Team:

Austin Troy

Professor, CU Denver
Urban & Regional Planning



Jarlath O'Neil –Dunne

Director, University of Vermont
Spatial Analysis Lab

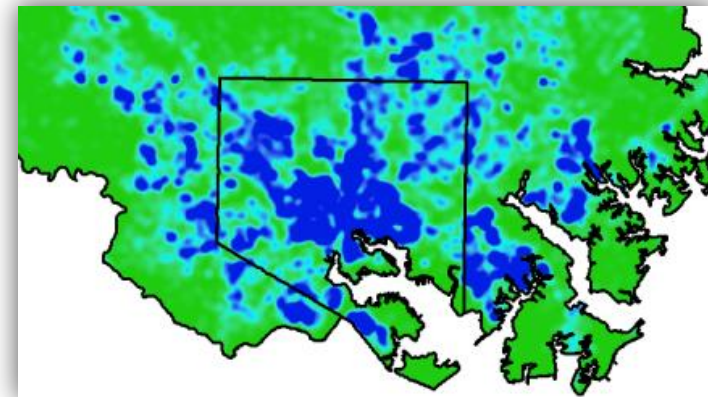


Morgan Grove

Research Scientist
USDA Forest Service



An RA collecting yard condition information in Baltimore



Crime density in and around Baltimore

